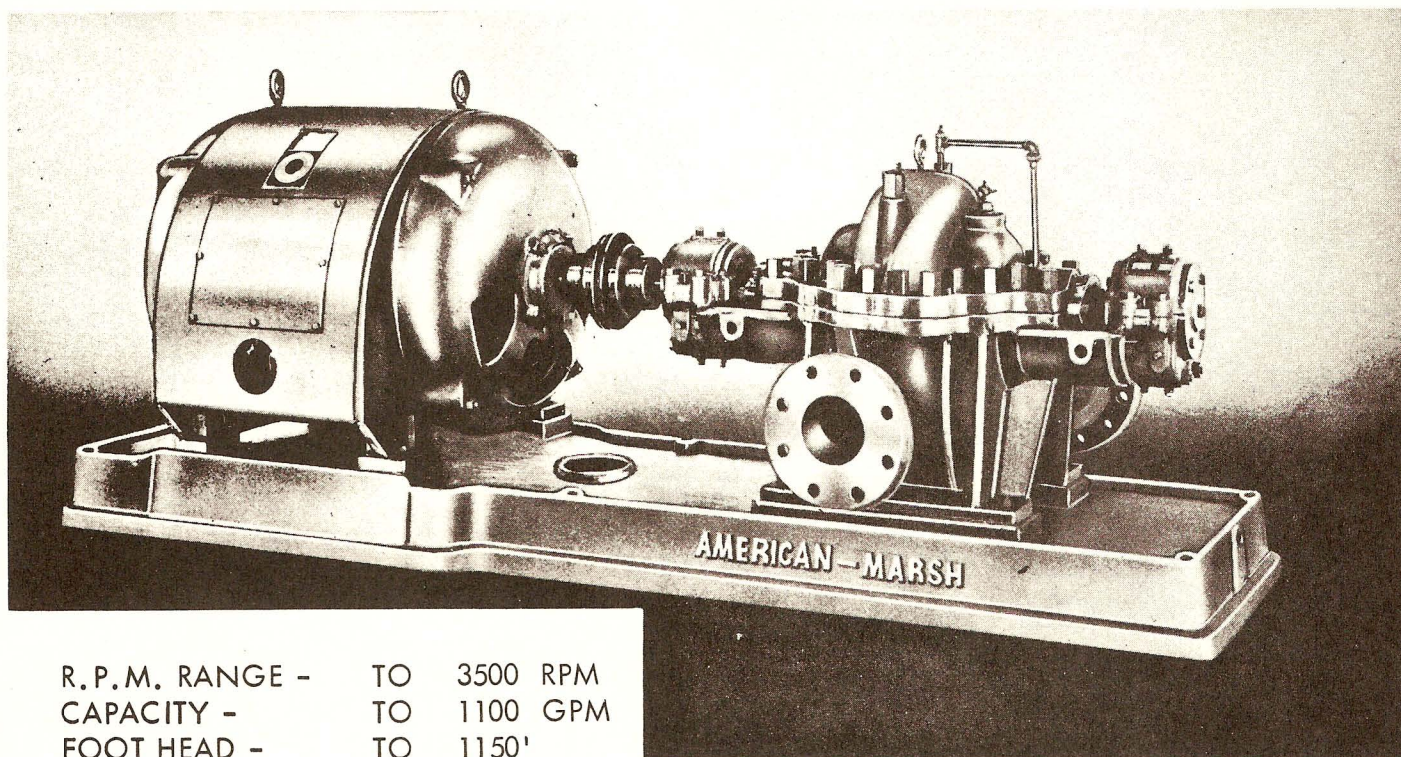


TYPE HKM, TWO STAGE BOILER FEED PUMP



R.P.M. RANGE - TO 3500 RPM
CAPACITY - TO 1100 GPM
FOOT HEAD - TO 1150'

The HKM is a two stage, single suction, boiler feed pump to extend the HHM line. The HKM is a high pressure, high temperature pump with the same heavy construction as the OSMH four stage unit. It is furnished with water cooled, ring oiled ball bearings, and, can be supplied with water jacketed stuffing boxes as well. Impellers are installed back-to-back for hydraulic balance.

STANDARD CONSTRUCTION INCLUDES...

- Hytensil cast iron casing - Horizontally split.
- Bronze enclosed type impellers.
- Bronze casing and impeller wearing rings.
- Bronze stuffing box throat bushings and interstage bushing.
- Stainless steel shaft sleeves.
- SAE 4140 steel shaft.
- Ring oiled, water cooled, ball bearings.
- Falk or equal flexible coupling.
- Cast iron, drip ledge baseplate.

OPTIONAL FEATURES (at extra cost)...

- Water cooled stuffing boxes.
- Smothering type glands.
- Stainless steel (or other alloy) trim

